



ANALOG WAY®
Pioneer in Analog, Leader in Digital

QUICK START GUIDE

Smart Quad - Ref. SQD200

Thank you for choosing **Analog Way** and the **Smart Quad**. By following these simple steps, you should be able to setup and use your powerful Hi-Resolution Mixer Switcher within minutes. Discover the **Smart Quad** extensive capabilities and intuitive interface while configuring your first show, and unleash your creativity for a new experience in show and event management by **Analog Way**.

What's in the box

- 1 x Smart Quad (SQD200)
- 1 x AC Power cable
- 2 x DVI-I male to HD15 female and DVI-D female breakout cable
- 1 x HD15 to 5 BNC cable
- 1 x Ethernet cross cable (for device update)
- 1 x DB9 to 4 BNC cable + mini-Din 4
- 1 x Set of 3 audio 10-pin screw terminals
- 4 x M4x12mm screws
- 1 x RCS - Remote Control Software (PC only) *
- 1 x Quick Start guide (PDF version) *
- 1 x User Manual (PDF version) *

* Download on our website: www.analogway.com

WARNING !

If required, front handles of the device can be dismantled, but with caution.

The original screws removed must not be reintroduced to their location without handles in place.

Substantial damages can occur, including risk of electric shock from the mains voltage.

Only **M4x12mm** screws can be used.
(They are supplied with the unit)

Quick install and setup

Key points:

- Red LED: Source is on Main
- Blinking button: Source selected for modification
- DSK function is available
- BLACK button allows to remove Layer (Clear function)

Getting started:

1. Observe all safety precautions. Rackmount chassis (please refer to user's manual) or install in «table top» configuration.
2. Connect all inputs (please refer to user's manual: Input specification).
3. Power on.
4. Perform factory reset:
 - Press the EXIT/MENU button, from the Home Menu
 - Select [Control] > navigate in the Menu by rotating the corresponding knob
 - Press the ENTER button to enter the control sub-menu
 - Select [Default Values] and press ENTER button. This operation should take approximately 30 seconds.

IMPORTANT: simply selecting a menu item will not set it to that value. Be sure to press the **ENTER** button when parametering the menu items.

Smart Quad - Ref. SQD200

Front Panel Description

INPUT SELECTIONS

- #1 to #7: Press to access analog source #1 to #7
- DVI 1 to DVI 2: Press to access DVI #1 or DVI #2
- SDI 1 to SDI 2: Press to access SDI #1 or SDI #2
- BLACK: Change the active layer to Black

FUNCTION CONTROL

- Bkgrnd Frame: Press to access Bkgrnd Frame Layer
- LOGO: Press to access logo Layer
- EFFECT: Press to select a customized effect
- FREEZE: Freeze the input linked to the current layer on MAIN
- PRESET: Select a customized preset (4 memories available)



STAND-BY: Hold for 3 seconds for stand-by Mode

EXIT/MENU: Home /Menu or back one level
ENTER: Validates the menu or command

QUADRAVISION
W1 to W4: Select the current Layer

TAKE
 Display the pre-selected sources onto the MAIN output with the selected effects

BUTTON COLOR USAGE

Solid red:		#1 = Source is on the main outputs #2 = Freeze enable #3 = Stand-by button #4 = Preset Selection
Solid green:		#1 = Source is on Preview #2 = Function available for modification
Blinking red:		Layer/source selected, and is currently active on the main output
Blinking green:		Layer/source selected, and is not currently active on the main output

OUTPUT SETUP

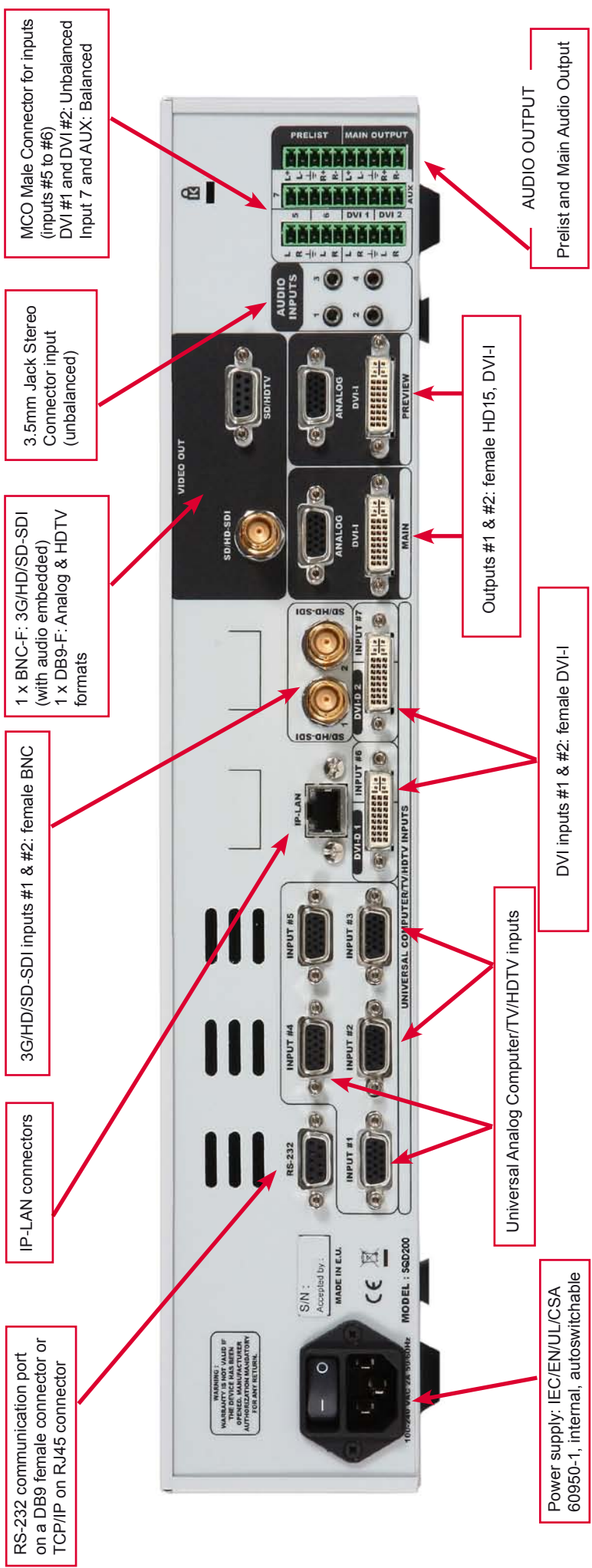
- 1- Press the EXIT/MENU button from the Home menu [all functions must be confirmed by the ENTER button]
- 2- Press [Output]
- 3- Press [Output format]
- 4- On Format line, select the display's native resolution
- 5- Control or adjust your display device (Monitor or Video Projector)
- 6- If necessary, select [Test Pattern] in the Output menu

INPUT SETUP

- 1- Press the EXIT/MENU button from the Home menu [all functions must be confirmed by the Enter button]
- 2- Press [Input] and [Autoset ALL]
- 3- If the acquisition has failed, check all connections and perform a manual setup
- 4- For a comprehensive Input Setup, please refer to user's Manual
- 5- For a manual input setup, press the EXIT/MENU button:
 - a) Press [Input],
 - b) Select the right input from Input #1 up to SDI #2, then
 - c) Select [Type].

**NOTE: To adjust input Size or Pos, use the [Layer] Menus.
 To adjust Blanking, use the Auto-Centering or Blanking adjustments in the Image menu.**

Smart Quad - Ref. SQD200 Rear Panel Description



WORKING WITH SQD200

The features of SQD200 can be controlled by the external remote control as:

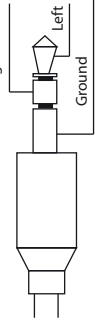
- Orchestra - Ref. ORC50
- Axion2 - Ref. ARC200
- Remote Control Software - Ref. RCS (supplied)
- Triple Remote Control Keypad - Ref. TRK-800
- Remote Control Keypad - Ref. RK-300

HOME MENU

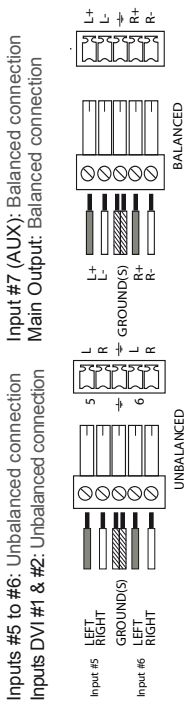
- **INPUT:** select to configure the 1 individual input types and resolutions
- **MAIN OUT:** in Mixer mode, select to set Format and Rate
- **PREVIEW OUT:** in Mixer mode, select to Format and Rate
- **PRESET:** select to store and use presets
- **IMAGE:** select to change source image settings of an input
- **KEYING/TITLING:** select to access keying and titling controls and parameters
- **LAYER:** select to adjust layer size, position, border transparency or transitions
- **LOGOS/FRAMES:** select to store (record), use and manage logos and frames
- **AUDIO:** select to access all audio input and output parameters
- **CONTROL:** select to access device software information, LAN settings, reset factory settings, amongst other user oriented functions (see next page)
- **VIRTUAL T-Bar:** select to access the Virtual T-Bar

AUDIO INPUTS CONNECTIONS

3.5mm Jack Stereo Connector
Inputs #1 to #4: Unbalanced connection



MCO Male Connectors
Inputs #5 to #6: Unbalanced connection
Inputs DVI #1 & #2: Unbalanced connection

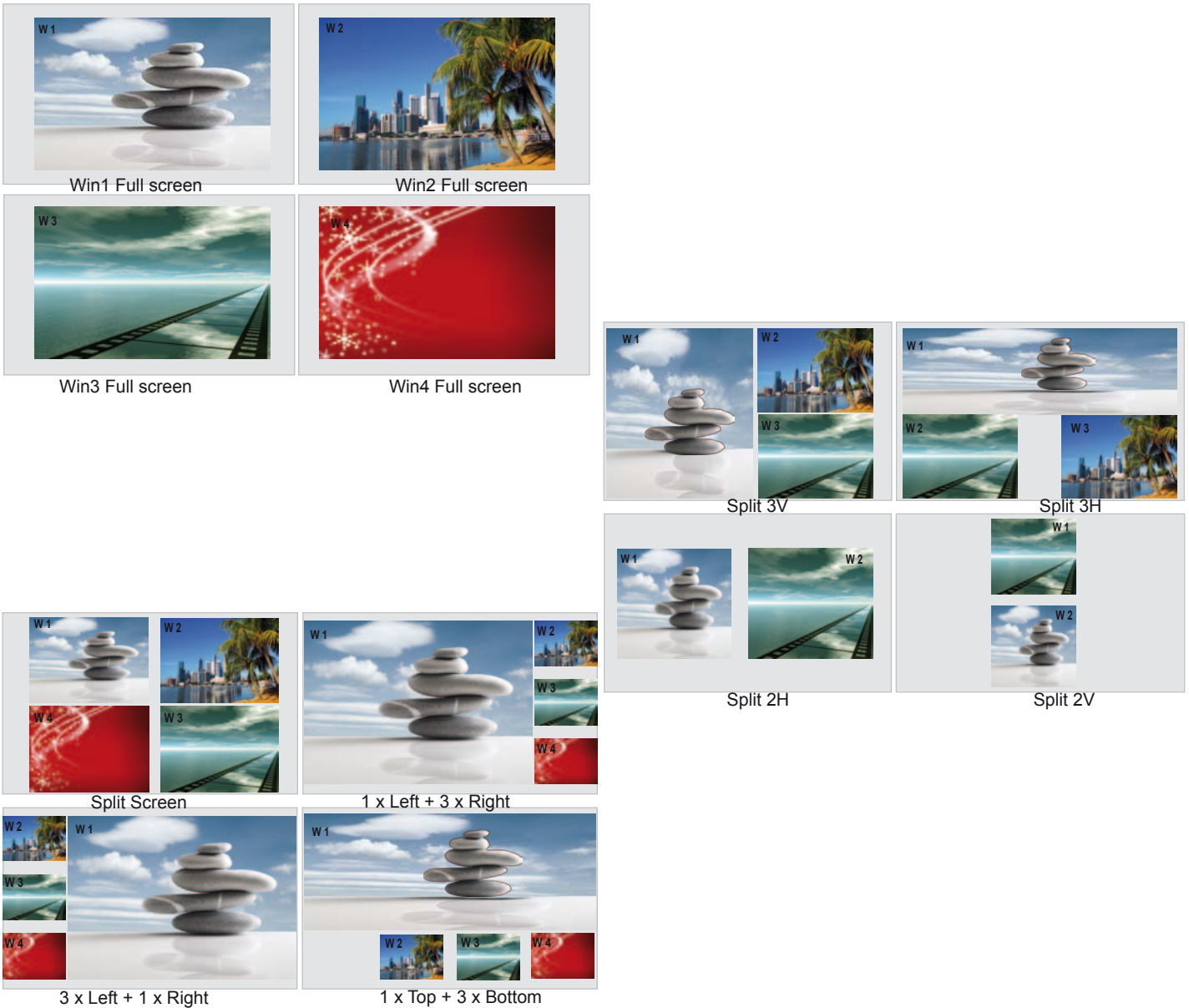


NOTE : The updater files are available on our web site: <http://www.analogway.com>

WORKING WITH TEMPLATES

Some templates are available for the QuadraVision Mode, you will find them here:

Templates are just here to provide some useful layers positions, you can adjust them manually at any time. Each template has to be saved in presets before doing any change. If it's not the case, all template settings will be deleted.



Warranty

This **Analog Way** product has a 3 year warranty on parts and labor, back to factory. This warranty does not include faults resulting from user negligence, special modifications, electrical surges, abuse (drop/crush), and/or other unusual damage.

Going further with the Smart Quad

For complete details and operations procedures, please refer to the **Smart Quad** User's Manual and our website for further information : www.analogway.com